

RPBC-50/280/4., RPBC-60/280/4.

multi-pole, lightning and surge arrester

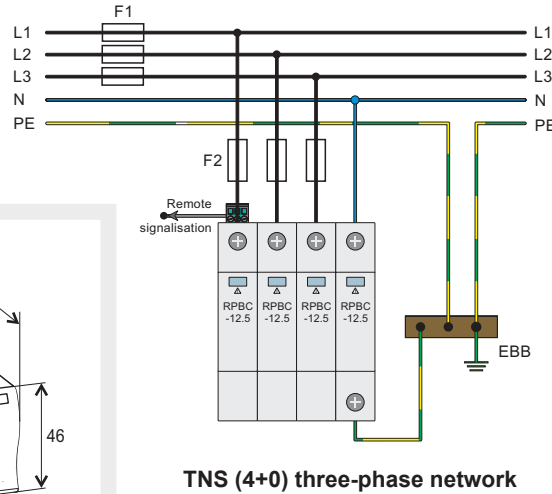
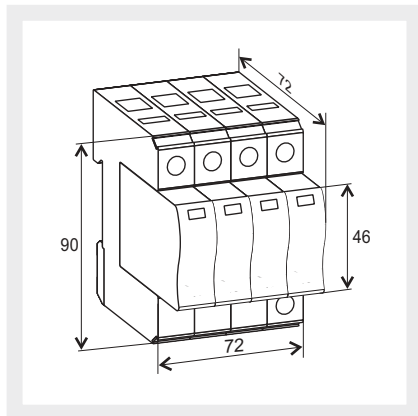
Type of arrester **RPBC-50/280/4, RPBC-50/280/4R**

Technical data

Dimensions	90 x 72 x 72 mm (DIN 43880: 4TE)
Packaging dimensions	108 x 79 x 74 mm
Weight	605 g RPBC-...R: 615 g

RPBC-50/280/4. - set: four arresters RPBC-12.5/280/1.

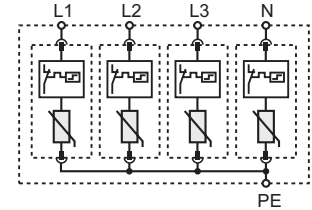
Technical data - see page 22.



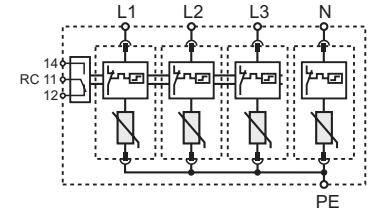
$I_{imp} = 12,5 \text{ kA (10/350 } \mu\text{s) / pole}$



RPBC-50/280/4



RPBC-50/280/4R



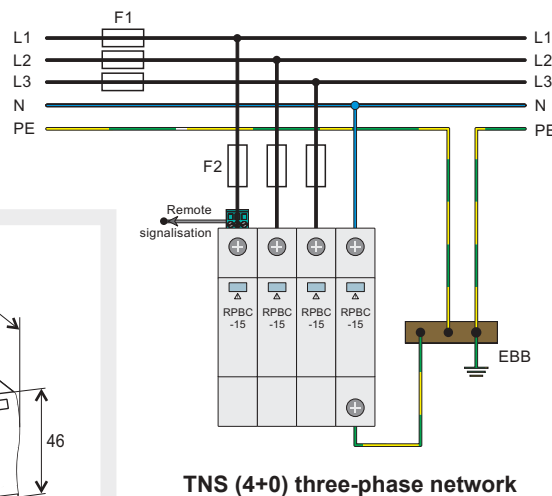
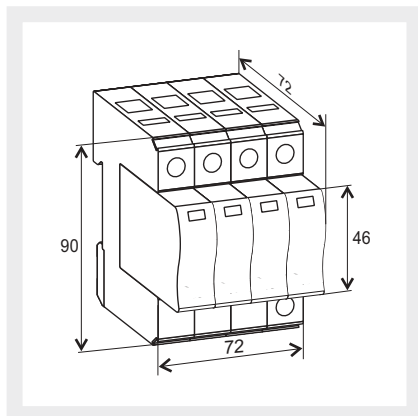
Type of arrester **RPBC-60/280/4, RPBC-60/280/4R**

Technical data

Dimensions	90 x 72 x 72 mm (DIN 43880: 4TE)
Packaging dimensions	108 x 79 x 74 mm
Weight	605 g RPBC-...R: 615 g

RPBC-60/280/4. - set: four arresters RPBC-15/280/1.

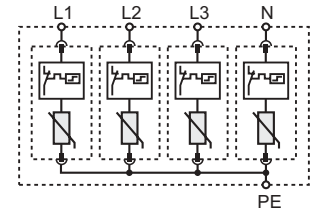
Technical data - see page 23.



$I_{imp} = 15 \text{ kA (10/350 } \mu\text{s) / pole}$



RPBC-60/280/4



RPBC-60/280/4R

